

# Hellwig PRODUCTS.com

559-734-7451 800-367-5480 FAX 559-734-7460

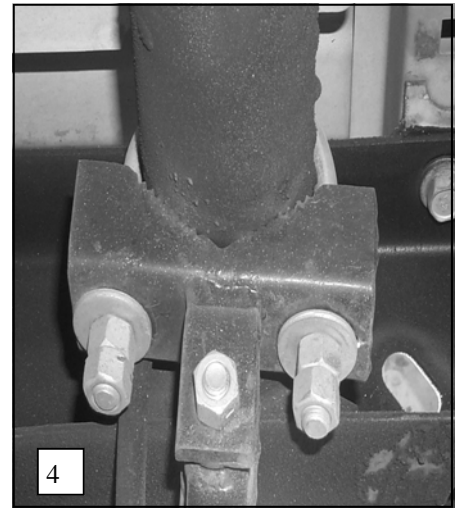
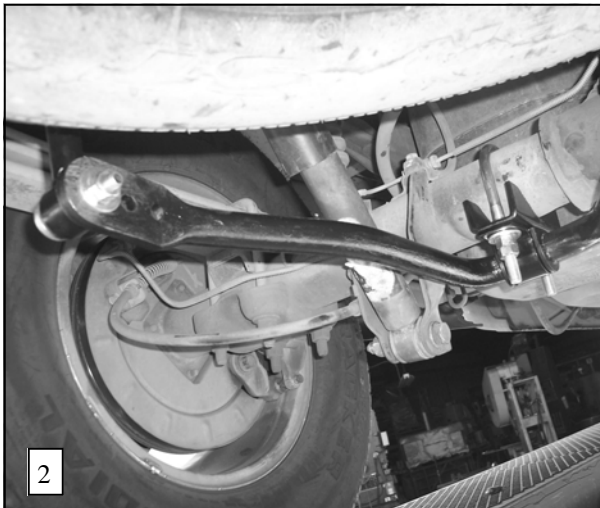
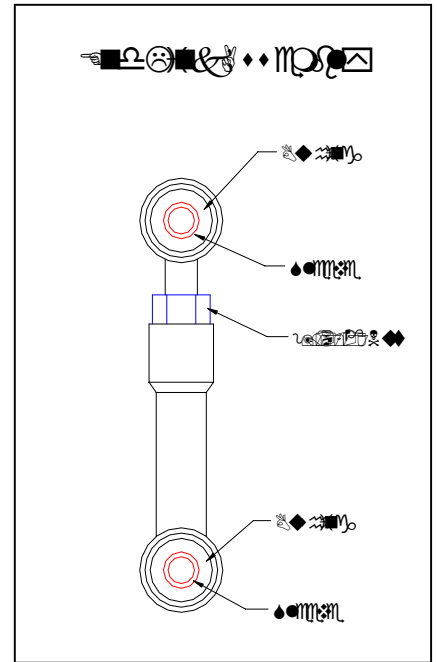
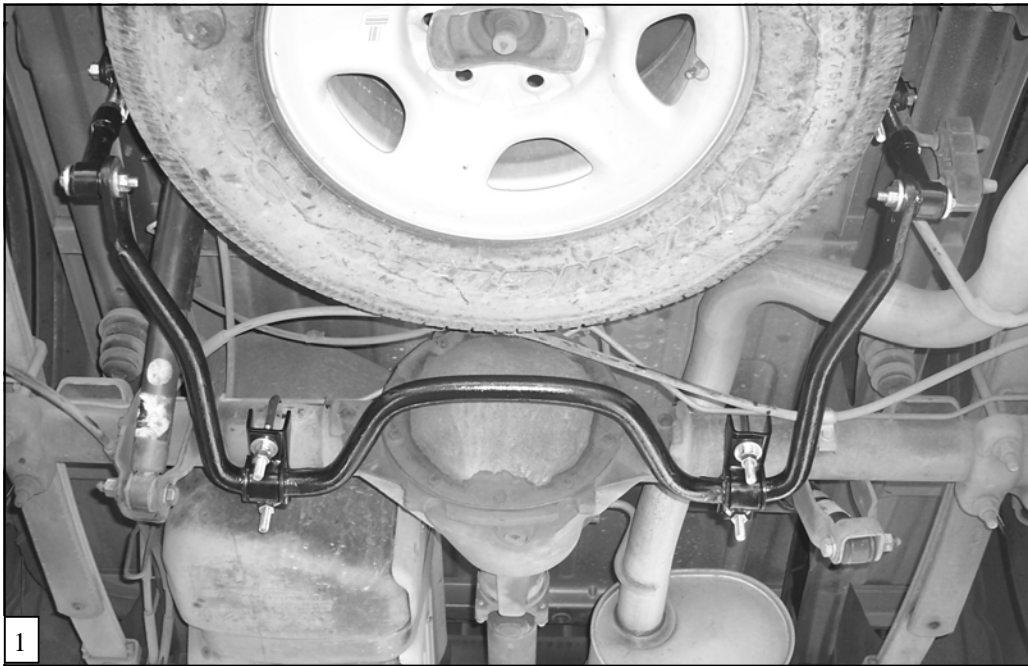
## INSTALLATION INSTRUCTIONS

### Rear Stabilizer Bar

4X2 & 4X4 1500-2500 SIERRA AND SILVERADO ALSO INCLUDES 1500  
HD TRUCKS

Thank you for purchasing a quality Hellwig Product.

PLEASE READ THIS INSTRUCTION SHEET COMPLETELY BEFORE STARTING YOUR INSTALLATION



# Hellwig PRODUCTS.com

559-734-7451 800-367-5480 FAX 559-734-7460

## TORQUE TABLE

**BOLT SIZE:** 3/8" = 20-30 ft. lbs. – 7/16" = 35-45 ft. lbs. – 1/2" = 50-70 ft. lbs. – 9/16" = 70-90 ft. lbs. – 5/8" = 120 ft lbs.

**NOTE: THIS UNIT IS DESIGNED TO MOUNT WITH THE ARMS OF THE SWAY BAR TOWARDS THE REAR OF THE VEHICLE.**

**SAFETY: BEFORE STARTING YOUR INSTALLATION BE SURE TO SET THE EMERGENCY BRAKE AND WHEELS ARE CHOKED.**

**NOTE: TO EASE INSTALLATION AND PROPERLY ADJUST THE BAR, THE WEIGHT OF THE VEHICLE MUST BE ON THE SUSPENSION AS IF DRIVING DOWN THE ROAD. DO NOT RAISE THE VEHICLE BY THE FRAME.**

**NOTE: THIS KIT INCLUDES LOCK NUTS WHICH REQUIRE TIGHTENING WITH A WRENCH AFTER BEING STARTED BY HAND.**

1. Lubricate and install the D-shaped poly-bushings onto the flat areas of the bar on each side of the hump area. The hump of the bar should tilt slightly downward. SEE PHOTO #1
2. Place U-bolts on axle inside of the shock mounts. **Make sure U-bolts are under the any brake lines, wires, or hoses on the axle to avoid pinching or crushing when tightening.** The threads should be pointing downward.
3. Place the U-plates onto the bushings mounted on the bar earlier. Place the saddle brackets onto the U-bolts on the axle tubes and attach the U-plates using the flat washers and nuts provided. **Leave loose at this time to allow for adjustment later.**
4. Rotate the bar on the axle tubes and adjust side to side so the bar is as centered as possible and has clearance around the differential housing.
5. Assemble the hourglass bushings and inner sleeves into the ends of the end-links. Lubricate the bushings and sleeves with supplied lubricant before assembly. SEE DIAGRAM for assembly of end links.
6. Place the second set of U-bolts around the tubular cross member above the spare tire just inside the frame rails with the legs pointing down. Place the saddle brackets with the welded U-shaped clevis on to the cross member mounted U-bolts. **Make sure U-bolts are under any lines or wires to avoid pinching or crushing when tightening. Leave loose at this time to allow for adjustment. SEE PHOTO # 3 & 4.**
7. Attach the end-links into the upper clevis brackets with the 7/16" hardware provided and let hang. **Leave all mounting hardware loose at this point to allow for adjustment later. SEE PHOTO # 3 .** Raise the bar up so the arms are as close to level as possible and attach the lower end-links to the rear-most hole in the sway bar. SEE PHOTO # 3 **Adjust the end links so that the arms of the sway bar are as level as possible.**
9. Rotate the U-bolts on the axle and tubular cross member to align the bar so it is as level with the frame as possible and the end-links are straight up and down as possible. **Be sure that the axle and cross member U-bolts are under any brake lines, wires or hoses to avoid pinching or crushing when tightening.**
10. With the bar properly aligned, verify that all vehicle components have proper amount of clearance, and nothing is going to be pinched or crushed when everything is tight. Torque all mounting hardware to the specified rates and double nut the axle and cross member U-bolts.
11. Bounce the vehicle checking for clearance on all under carriage components. Exhaust, shocks, differential, etc. Test drive the vehicle and recheck all clearances and the installation alignment. Adjust as needed. Re-check your installation after one week of driving and periodically on a regular basis.
12. The sway bars arms have three mounting holes. Mounting the sway bar on the outer hole is the nominal position. For firmer settings, use the inner holes. We recommend starting with the outer mounting hole as in photo ( 2 ) until you are accustomed to the vehicles new handling characteristics. Select the mounting point that best fits your driving style.

**ATTENTION INSTALLER: BE SURE CUSTOMER RECEIVES THIS INSTRUCTION SHEET, WARNING CARDS AND THE WARRANTY FORM.**

# Hellwig PRODUCTS.com

559-734-7451 800-367-5480 FAX 559-734-7460

## PARTS LIST RSB # 7800

<b>PART #</b>	<b>QTY</b>	<b>DESCRIPTION</b>
21208199	1	1-1/8" SWAY BAR
<b>20907800</b>	<b>1</b>	<b>COMPLETION KIT #-7800</b>
118000444	2	7/16" X 3-1/4" X 4-1/2" ROUND U-BOLT
118000672	2	7/16" X 3-1/8" X 5-5/8" ROUND U-BOLT
20800080	2	6-8" ADJUSTABLE FEMALE END LINK
20800083	2	4.3" ADJUSTABLE MALE END LINK
20800871	2	SADDLE BRACKET
20800097	2	SADDLE BRACKET WITH WELDED CLEVIS
20800430	2	U-PLATE
111000486	2	1-1/8" POLY BUSHING
<b>125020050</b>	<b>1</b>	<b>SMALL PARTS BAG #-050</b>
105421042	8	7/16" HEX NUT
107401042	8	7/16" LOCK NUT
102400023	12	7/16" ID X 1/8" THICK WASHER
111000050	4	5/8" HOURGLASS BUSHING
20800046	4	7/16" X 1.38" STEEL SLEEVE
101500004	2	7/16" X 2-3/4" CAP SCREW
101500185	2	7/16" X 2-1/4" CAP SCREW
105621055	2	9/16" HEX NUT
119000599	2	ACCRO SEAL BUSHING LUBE
135007800	1	INSTRUCTION SHEET ( R-7800 )

**7800 ( R-7800)**

**09/09/05**